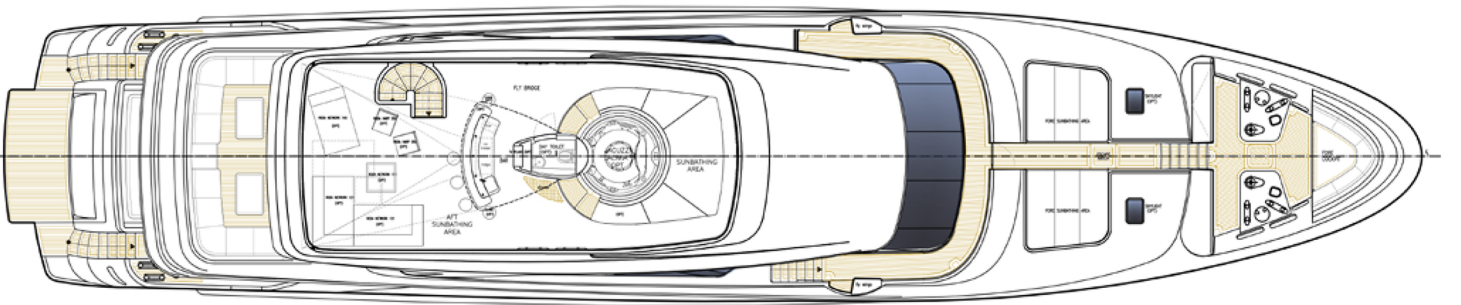




25. General arrangement plans

Profile



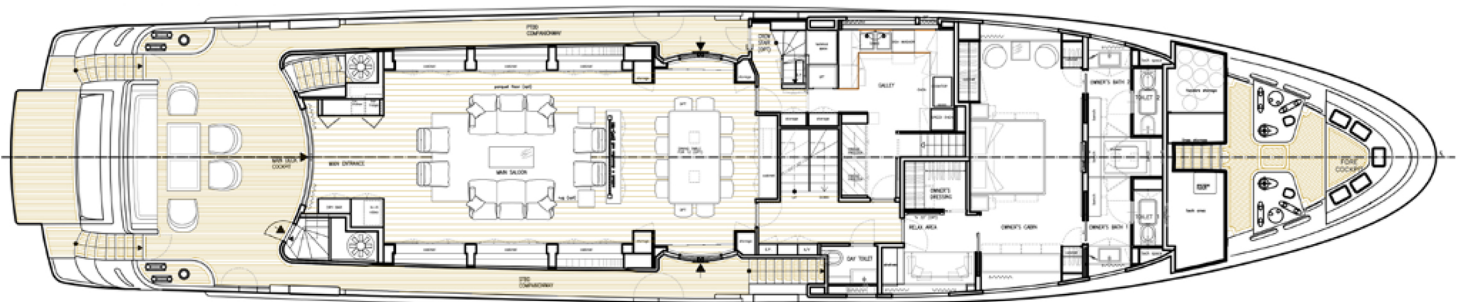
26. General arrangement plans

Flying bridge



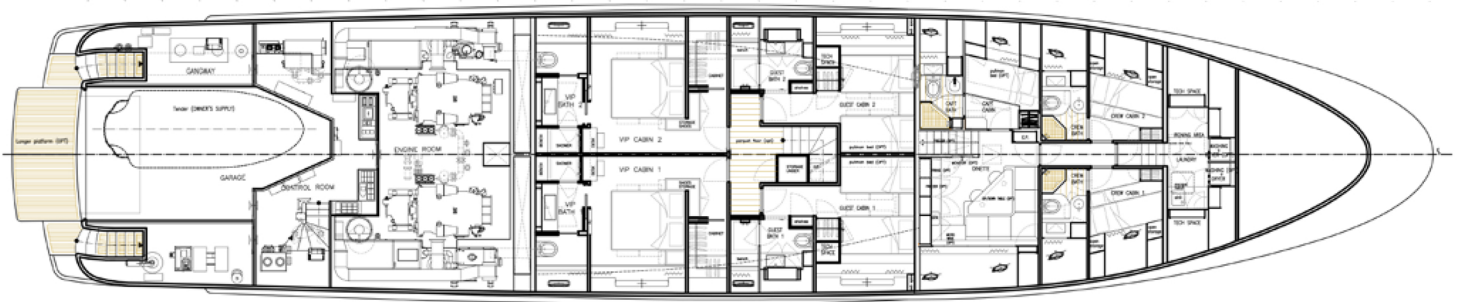
27. General arrangement plans

Upper deck



28. General arrangement plans

Main deck



29. General arrangement plans

Lower deck

Builder	Sanlorenzo
Model	SD122
Year build	2013
Material	GRP
Guest accommodation	5 cabins (10 + 2 people)
Crew accommodation	3 cabins (5 people)
Wood	streaked opaque oak, white laquered
Fabrics	Penelope Oggi, C&C, Lintea Mare
Stone	Crema Luna marble, Tobacco Brown marble
Length overall	37,95 m
Maximum beam	8,00 m
Displacement @ half load (+/- 3%)	222 t
Displacement @ full load (+/- 3%)	240 t
Electrical System	220/127V 60Hz with ASEA frequency converters
Engine	2 x CAT C32 ACERT 1193 kW
Consumption	2 x 302 l/h
Maximum speed (approx)	17 kn
Cruising speed (approx.)	11 kn
Main fuel tanks capacity	28.710 l
Daily fuel tanks	5.490 l
Fresh water tank capacity	5.000 l
Black/grey water tank capacity	3.000 l
Tender	William 5200 – 5,2 m length
Engines hours	Port Engine 2.919 h - Strb Engine 2.919 h
Generators hours	Port Generator 5.095 h - Strb Generator 5.116 h
Price	€ 7.500.000 (VAT excluded)

30. Equipment, main options & miscellanea